



PAD 14 / STAND C08

2025

SPV TALL

ROVE



SMART VERTICAL AUTOMATION

EXPIRATION ON 31 JULY 2025

WWW.GERARDI.IT

STATIC TOOL HOLDERS

A wide range of driven tools with an unbeatable price / quality ratio



SCAN THE QR CODE AND CHOOSE FROM A WIDE RANGE ON THE CATALOGUE

DIN 69880

DMG MORI

Mazak

LOKUMA

BMT

Bolt Mounted Turret



Nakamura-Tome



TSUGAMI CORPORATION

Ask the password to your supplier

EXAMPLE KIT 1

3 PCS

REDUCTION UP TO
10%

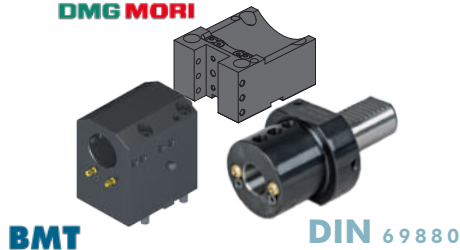
EXAMPLE KIT 2

4 PCS

REDUCTION UP TO
15%

PURCHASING 3 STATIC TOOLS

DMG MORI

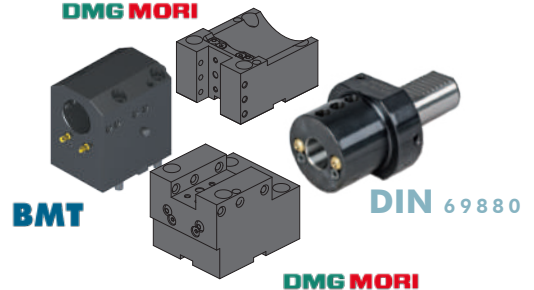


BMT

DIN 69880

PURCHASING 3 STATIC TOOLS

DMG MORI



BMT

DIN 69880

DMG MORI

THE DRIVEN TOOL FOR YOUR LATHE

A quick overview of manufacturers on which all our Driven Tools can be mounted.

T05 pages	Manufacturer	Turret
From Page 4.11 to Page 4.44	DIN 5480	VDI
	DIN 5482	
	BARUFFALDI	
	DIN 1809	
From Page 5.21 to Page 5.32	BIGLIA	BMT 40
		BMT 55
From Page 5.33 to Page 5.39	DOOSAN	BMT 45
	Hardinge	
	Jyoti	
	Nexturn	
	Samsung	
	Victor	
From Page 5.40 to Page 5.44	DOOSAN	BMT 55
	Goodway	
	Hardinge	
	Hwacheon	
	Hyundai WIA	
	Jyoti	
	Samsung	
	Victor	
	Takisawa Taiwan	

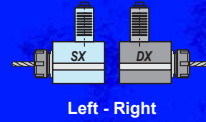
T05 pages	Manufacturer	Turret
From Page 5.49 to Page 5.51	DOOSAN	BMT 65
	Goodway	
	Haas	
	Hardinge	
	Hwacheon	
	Hyundai WIA	
	Samsung	
	Spinner	
	Victor	
	Takisawa Taiwan	
From Page 5.54 to Page 5.54	DOOSAN	BMT 75
	Hwacheon	
	Hyundai WIA	
	Samsung	
	Victor	
From Page 5.51 to Page 5.54	DOOSAN	BMT 85
	Hwacheon	
	Hyundai WIA	
	Samsung	
	Victor	

T05 pages	Manufacturer	Turret	
From Page 5.69 to Page 5.69	DMG MORI	NL NLX	
	DMG MORI		
	Takisawa Japan	NZ	
	DMG MORI	SL	
	Cmz	ZL DL	
	Goodway		
	From Page 5.75 to Page 5.78	GOODWAY	G1 G3 G4
		HAAS	L= 104,85
			L= 117,55
	L= 130,25		
From Page 5.79 to Page 5.90	MAZAK	QTN 1 VDI 40	
		QTN 2 VDI 40	
		QTN 3 VDI 50	
		QTS SMART BMT68	
		HQ	

T05 pages	Manufacturer	Turret
From Page 5.109 to Page 5.118	MIYANO	Ø38
	Goodway	Ø45
	MIYANO	Ø 54
From Page 5.122 to Page 5.125	NAKAMURA	BMT 44
	Muratec	
	NAKAMURA	BMT 55
	Cmz	
From Page 5.127 to Page 5.133	NAKAMURA	BMT 65
		VDI 30
	OKUMA	VDI 40
		BMT 55
From Page 5.135 to Page 5.138		BMT 60
		BMT45 SP
		VDI25 SP
	SPINNER	BARUFFALDI VDI 30 BARUFFALDI VDI 40 BARUFFALDI VDI 50
	TAKISAWA JAPAN	BMT 60
	TAKISAWA TAIWAN	BMT 60
From Page 5.149 to Page 5.156	TSUGAMI	BMT 65

DRIVEN TOOLS

Upgrade your lathe and boost productivity!



SCAN TO DISCOVER HIGH PERF. TYPE

HIGH PERFORMANCE MODELS AVAILABLE

(+ TORQUE, + RPM)



Which is your machine model?

WE BET IT IS ON OUR ESTORE !

- 1 What brand and model of lathe are you looking for ?
DOOSAN / HARDINGE / GOODWAY / DMG MORI / MIYANO ecc...
- 2 Which kind of turret has your lathe?
VDI / BMT55 / BMT65 ecc...



Check out our estore, with two simple questions you will find all the Driven Tools suitable for the lathe you have !

💧 Int. Coolant
 🔄 Direction of rotation same as machine spindle
 🔄 Direction of rotation opposite to machine spindle
 🔄 Both direction of rotation to machine spindle available

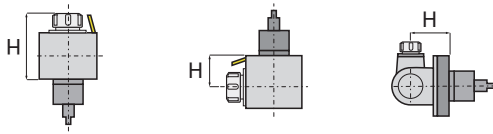
* The torque value, expressed in Nm, is the maximum allowed. Prolonged use at this value can damage the driven tool; for longer life and less wear, it is recommended to keep it below this limit.

BMT (Bolt Mounted Turret)

COMPATIBLE WITH DOOSAN / HARDINGE / SAMSUNG / HWACHEON / HYUNDAI WIA / VICTOR / HAAS / SPINNER. BMT 65 ALSO COMPATIBLE WITH HAAS LATHES!

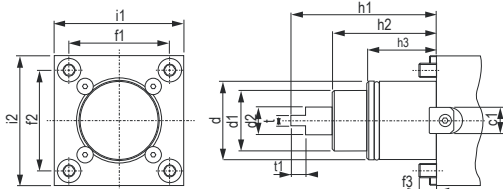
Tipo Type	BMT	Cod.	ER	H Max	Nm*	Rpm	LIST PRICE €	SPECIAL PRICE €
Axial	45	99.DS.A03	25	57,2	35	8000	1.033	839
Axial	45	99.DS.A04	25	57,2	35	8000	1.179	929
Axial	55	99.DS.A01	25	57,2	40	8000	1.243	899
Axial	55	99.DS.A02	25	57,2	40	8000	1.363	979
Axial	65 HAAS READY!	99.DS.A41	32	72,5	70	6000	1.274	1.049
Axial	65 HAAS READY!	99.DS.A42	32	72,5	70	6000	1.465	1.179
Axial	75	99.DS.A34	40	90,2	100	6000	1.497	1.249
Axial	75	99.DS.A35	40	90,2	100	6000	1.720	1.399
Radial	45	99.DS.A07C	25	65	35	8000	1.822	1.499
Radial	45	99.DS.A08C	25	65	35	8000	2.190	1.799
Radial	55	99.DS.A11C	25	70	40	8000	2.038	1.599

Tipo Type	BMT	Cod.	ER	H Max	Nm*	Rpm	LIST PRICE €	SPECIAL PRICE €
Radial	55	99.DS.A12C	25	70	40	8000	2.408	1.899
Radial	65 HAAS READY!	99.DS.A51C	32	72	70	6000	2.140	1.699
Radial	65 HAAS READY!	99.DS.A52C	32	72	70	6000	2.534	1.999
Radial	65 HAAS READY!	99.DS.A73C	32	100	70	6000	2.310	1.899
Radial	65 HAAS READY!	99.DS.A74C	32	100	70	6000	2.711	2.199
Radial	75	99.DS.A38C	40	60	100	6000	3.311	2.649
Radial	75	99.DS.A39C	40	60	100	6000	3.973	3.099
Adj ±90°	45	99.DS.A16	20	65	15	8000	4.698	3.899
Adj ±90°	45	99.DS.A17	20	65	15	8000	6.111	4.699
Adj ±90°	55	99.DS.A23	20	65	15	8000	4.698	3.899
Adj ±90°	55	99.DS.A66	20	65	15	8000	6.111	4.699
Adj ±90°	65 HAAS READY!	99.DS.A64	25	75	25	6000	5.221	4.299
Adj ±90°	65 HAAS READY!	99.DS.A65	25	75	25	6000	6.748	5.199
Adj ±90°	75	99.DS.A47	25	75	25	6000	5.221	4.299
Adj ±90°	75	99.DS.A48	25	75	25	6000	6.748	5.199

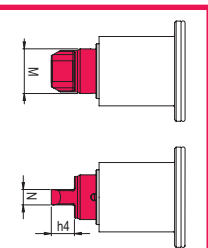


BMT ATTACHMENT WITH STANDARD TENON

Driven tools with bigger tenon available on request

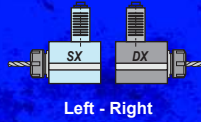


BMT	c1	d	d1	d2	f1	f2	f3	h1	h2	h3	i1	i2	t	t2	h4	N	ØM
45	15	Ø45	35	14	58	58	10	84	60	40	75	75	6	8,5	-	-	-
55	15	Ø55	40	16	64	64	14	104	75	30	85	85	8	8,5	9,5	8	29
65	18	Ø65	45	18	70	73	15	112	83	32	94	94	10	14	15	10	29
75	25	Ø75	55	23	90	90	15	110	80	43	112	112	14	15	-	-	-
85	25	Ø85	65	33,5	100	100	18	140	100	43	125	125	16	20	-	-	-



DRIVEN TOOLS

Upgrade your lathe and boost productivity!



SCAN TO DISCOVER HIGH PERE. TYPE

HIGH PERFORMANCE MODELS AVAILABLE (+ TORQUE, + RPM)



● Int. Coolant
 ↻ Direction of rotation same as machine spindle
 ↻ Direction of rotation opposite to machine spindle
 ↻ ↻ Both direction of rotation to machine spindle available
 * The torque value, expressed in Nm, is the maximum allowed. Prolonged use at this value can damage the driven tool; for longer life and less wear, it is recommended to keep it below this limit.

DIN 5480 / 5482

VDI - DIN69880
 * In case of order specify always left or right orientation you need

Type	VDI	Cod.	ER	H	* Nm	Rpm	LIST PRICE €	SPECIAL PRICE €
	Axial	30 ↻ 99.ST.8003	25	66	32	6000	917	779
	Axial	30 ↻ 99.ST.8011 💧	25	66	32	6000	1.185	979
	Axial	40 ↻ 99.ST.8005	32	95	63	6000	1.147	999
	Axial	40 ↻ 99.ST.8013 💧	32	95	63	6000	1.499	1.229
	Radial	30 ↻ 99.ST.8030	25	55	32	6000	1.926	1.599
	Radial	30 ↻ 99.ST.8038	25	55	32	6000	2.216	1.829
	Radial	30 ↻ 99.ST.8031	25	85	32	6000	2.018	1.699
	Radial	30 ↻ 99.ST.8032	25	100	32	6000	2.056	1.749
	Radial	30 ↻ 99.ST.8039 💧	25	85	32	6000	2.302	1.999
	Radial	30 ↻ 99.ST.8040 💧	25	100	32	6000	2.784	2.399
	Radial	40 ↻ 99.ST.8033	32	100	63	6000	2.436	1.999
	Radial	40 ↻ 99.ST.8041 💧	32	100	63	6000	2.798	2.299
	Axial	30 ↻ 99.ST.8201	25	94	32	6000	865	779
	Axial	30 ↻ 99.ST.8207 💧	25	94	32	6000	1.161	979
	Axial	40 ↻ 99.ST.8203	32	115	63	5000	1.041	899
	Axial	40 ↻ 99.ST.8208 💧	32	115	63	5000	1.347	1.129
	Radial	30 ↻ 99.ST.8217	25	55	32	6000	1.735	1.449
	Radial	30 ↻ 99.ST.8223 💧	25	55	32	6000	2.025	1.699
	Radial	40 ↻ 99.ST.8220	32	100	63	5000	2.078	1.699
	Radial	40 ↻ 99.ST.8226 💧	32	100	63	5000	2.430	1.999

BARUFFALDI

VDI - DIN69880
 * In case of order specify always left or right orientation you need

	Axial	30 ↻ 99.BF.0003	25	94	32	6000	895	779
	Axial	30 ↻ 99.BF.0010 💧	25	94	32	6000	1.193	979
	Axial	40 ↻ 99.BF.0005	32	117	63	5000	1.079	929
	Axial	40 ↻ 99.BF.0011 💧	32	115	63	5000	1.391	1.179
	Radial	30 ↻ 99.BF.0021	25	55	32	6000	1.781	1.499
	Radial	30 ↻ 99.BF.0027 💧	25	55	32	6000	2.086	1.749
	Radial	40 ↻ 99.BF.0024	32	100	63	5000	2.140	1.749
	Radial	40 ↻ 99.BF.0030 💧	32	100	63	5000	2.506	2.049

DIN 1809

VDI - DIN69880
 * In case of order specify always left or right orientation you need

	Axial	30 ↻ 99.DP.0903	25	94	32	6000	865	779
	Axial	30 ↻ 99.DP.0910 💧	25	94	32	6000	1.161	979
	Axial	40 ↻ 99.DP.0905	32	115	63	5000	1.041	879
	Axial	40 ↻ 99.DP.0911 💧	32	115	63	5000	1.347	1.129
	Radial	30 ↻ 99.DP.0919	25	55	32	6000	1.735	1.449
	Radial	30 ↻ 99.DP.0925 💧	25	55	32	6000	2.025	1.699
	Radial	40 ↻ 99.DP.0922	32	100	63	5000	2.078	1.699
	Radial	40 ↻ 99.DP.0928 💧	32	100	63	5000	2.430	1.999

BIGLIA

NICKEL PLATING SOLID BODY

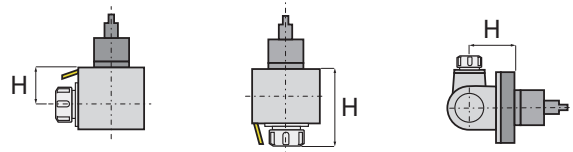
BMT55: B301 / 445 / 455 / 470 / 501 (Y-S) 510 / 545 / 550 / 565 / 650 / 658 / 1200 / 446 / 465 / 745 / 765 / B750 / 1250 16 STATIONS

Type	BMT	Cod.	Biglia Code	ER	H	* Nm	Rpm	LIST PRICE €	SPECIAL PRICE €
	Axial	55 ↻ 99.BG.A01	10.57.88.00	25	70	47	6000	887	699
	Axial	55 ↻ 99.BG.A02	T.134-00061	32	70	47	6000	887	699
	Axial	55 ↻ 99.BG.A03	T.134-00071 💧	32	70	47	6000	1.227	949
	Radial	55 ↻ 99.BG.A05	10.57.87.00	25	70	47	6000	1.661	1.249
	Radial	55 ↻ 99.BG.A06	T.134-00062	32	70	47	6000	1.661	1.249
	Radial	55 ↻ 99.BG.A07	T.134-00072 💧	32	70	47	6000	2.179	1.649
	Radial	55 ↻ 99.BG.A08	T.134-00076	25	100	47	6000	1.868	1.399
	Radial	55 ↻ 99.BG.A09	T.134-00077	32	100	47	6000	1.868	1.399
	Radial	55 ↻ 99.BG.A10	T.134-00088 💧	32	100	47	6000	2.179	1.649
	Adj ±90°	55 ↻ 99.BG.A15	T.134-00025	16	60	16	6000	3.830	2.849
	55 ↻ 99.BG.A16	T.134-00057	20	60	16	6000	3.830	2.849	

DMGMORI

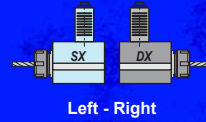
SL/ZL 150, 153, 154 (MC / SMC / Y / SY)
 DL 15, 150 (MC)
 NLX 1500 - 2000 - 2500 - 3000 12 Posizioni
 NZ 1500 - 2000 - 3100 - 3150 - 3200 16 Posizioni

Type	Cod.	ER	H Max	* Nm	Rpm	LIST PRICE €	SPECIAL PRICE €
	Axial ↻ 99.MS.A28	32	55,5 +60	70	6000	1.337	1.199
	Axial SL/ZL ↻ 99.MS.A29 💧	32	55,5 +60	70	6000	1.758	1.599
	Radial DL ↻ 99.MS.A33	32	55	70	6000	2.102	1.899
	Radial ↻ 99.MS.A34 💧	32	55	70	6000	2.522	2.299
	Axial ↻ 99.MS.A59	32	89,9	60	10.000	1.249	1.099
	Axial NLX ↻ 99.MS.A62	40	92	60	10.000	1.847	1.429
	Axial ↻ 99.MS.A60 💧	32	89,9	60	10.000	1.847	1.429
	Axial ↻ 99.MS.A63 💧	40	92	60	10.000	1.847	1.429
	Radial ↻ 99.MS.A72	32	90	60	10.000	2.674	2.099
	Radial NLX ↻ 99.MS.A76	40	90	60	10.000	2.993	2.349
	Radial ↻ 99.MS.A73 💧	32	90	60	10.000	2.993	2.349
	Radial ↻ 99.MS.A77 💧	40	90	60	10.000	2.993	2.349
	Axial ↻ 99.MS.A101	25	84,3	50	12.000	1.249	1.049
	Axial NZ ↻ 99.MS.A103	32	89,2	50	12.000	1.847	1.479
	Axial ↻ 99.MS.A102 💧	25	84,3	50	12.000	1.847	1.479
	Axial ↻ 99.MS.A104 💧	32	89,2	50	12.000	1.847	1.479
	Radial ↻ 99.MS.A106	25	85	50	12.000	2.674	2.099
	Radial NZ ↻ 99.MS.A108	32	85	50	12.000	2.993	2.349
	Radial ↻ 99.MS.A107 💧	25	85	50	12.000	2.993	2.349
	Radial ↻ 99.MS.A109 💧	32	85	50	12.000	2.993	2.349



DRIVEN TOOLS

Upgrade your lathe and boost productivity!



SCAN TO DISCOVER
HIGH PERF. TYPE

HIGH PERFORMANCE
MODELS AVAILABLE

(* TORQUE, * RPM)



💧 Int. Coolant
 🔄 Direction of rotation same as machine spindle
 🔄 Direction of rotation opposite to machine spindle
 🔄 🔄 Both direction of rotation to machine spindle available
 * The torque value, expressed in Nm, is the maximum allowed. Prolonged use at this value can damage the driven tool; for longer life and less wear, it is recommended to keep it below this limit.

HAAS



* Interchangeable couplings for any type of Haas turret

Type	Cod.	ER	H Max	h1	* Nm	Rpm	LIST PRICE €	SPECIAL PRICE €
Axial	99.HA.590082	32	75	117,5	63	6000	945	749
Axial	99.HA.590082B	32	75	117,5	63	6000	1.179	899
Axial	99.HA.590083	32	75	104,8	63	6000	945	749
Axial	99.HA.590083B	32	75	104,8	63	6000	1.179	899
Axial	99.HA.596352	32	75	130,25	63	6000	945	749
Axial	99.HA.596352B	32	75	130,25	63	6000	1.179	899
Radial	99.HA.590084	32	75	117,5	63	6000	1.773	1.349
Radial	99.HA.590084B	32	75	117,5	63	6000	2.240	1.699
Radial	99.HA.590085	32	75	104,8	63	6000	1.773	1.349
Radial	99.HA.590085B	32	75	104,8	63	6000	2.240	1.699
Radial	99.HA.596353	32	75	130,25	63	6000	1.773	1.349
Radial	99.HA.596353B	32	75	130,25	63	6000	2.240	1.699

MAZAK

QTN3 QUICK TURN NEXUS QTN 300 / 350 / 400 / 450 - SQT 28 / 30 - 300 - QTN2 12 Posizioni QUICK TURN NEXUS QTN 200 / 250 SUPER QUADREX TURN SQT 15/18 - 200 / 250 - SMART QTS1 - BMT68 QUICK TURN SMART QTS 100M / 200M QT COMPACT 100M - 200M - 300M

Type	Cod.	ER	H	* Nm	Rpm	LIST PRICE €	SPECIAL PRICE €
Off. Axis	99.MZ.A71	40	145	100	4000	3.320	3.100
Off. Axis	99.MZ.A72	40	145	100	4000	3.631	3.342
Radial	99.MZ.A75	40	160	100	4000	3.424	3.200
Radial	99.MZ.A81	40	160	100	4000	3.943	3.649
Off. Axis	99.MZ.A58	32	120	80	6000	2.491	1.549
Off. Axis	99.MZ.A59	32	120	80	6000	3.010	2.100
Radial	99.MZ.A65	32	120	80	6000	2.698	1.649
Radial	99.MZ.A66	32	120	80	6000	2.906	1.949
Axial	99.MZ.A03	32	70	60	6000	1.972	1.849
Axial	99.MZ.A06	32	70	60	6000	2.387	2.199
Radial	99.MZ.A09	32	80	60	6000	2.698	2.499
Radial	99.MZ.A10	32	80	60	6000	2.906	2.799

MIYANO

Ø 45: WT100 - TW1
Ø 54: WT100 - TW1

Type	Ø	Cod.	ER	H Max	* Nm	Rpm	LIST PRICE €	SPECIAL PRICE €
Axial	45	99.MY.A02	25	57,6	35	6000	853	749
Axial	45	99.MY.A03	25	57,6	35	6000	1.022	899
Axial	54	99.MY.A09	32	79,4	60	6000	993	849
Axial	54	99.MY.A10	32	79,4	60	6000	1.140	949
Radial	45	99.MY.A05	25	65	35	6000	1.506	1.249
Radial	45	99.MY.A06	25	65	35	6000	2.456	1.749
Radial	54	99.MY.A11	32	75	60	6000	2.284	1.899
Radial	54	99.MY.A12	32	75	60	6000	2.207	1.849

NAKAMURA-TOME

BMT44 WT100 - TW1
BMT55 SUPER NTJ-NTJX/NTM 3/TMC 18/ TW10/SC150-250/WT150-250/WTW 150/WTS 150/WT100

Type	BMT VDI	Cod.	ER	H Max	* Nm	Rpm	LIST PRICE €	SPECIAL PRICE €
Axial	45	99.NK.A40	25	57,2	40	6000	946	799
Axial	45	99.NK.A43	25	57,2	40	6000	1.081	899
Axial	55	99.NK.A03	32	72,2	63	6000	993	849
Axial	55	99.NK.A04	32	72,2	63	6000	1.530	1.299
Radial	45	99.NK.A50	25	60	40	6000	1.676	1.399
Radial	45	99.NK.A53	25	60	40	6000	2.008	1.699
Radial	55	99.NK.A13	32	55	63	6000	1.868	1.549
Radial	55	99.NK.A14	32	55	63	6000	2.519	2.099

OKUMA

BMT60: SPACE TURN LB 200EX/LB 2500EX/LB3000EX/GENOS SERIES L300-MW/ MULTUS U3000/U40007/LU3000EX M/MY VDI40: OKUMA CAPTAIN L370 M - ES L10 M - GENOS L300, L3000-E M/MY (VDI40) LB 300 MW - LB/LU 300 MY - LB/LU 300, 3000 M (VDI40)

Type	Cod.	ER	H	* Nm	Rpm	LIST PRICE €	SPECIAL PRICE €
Axial	99.OK.A80	32	79	60	6000	1.687	1.299
Axial	99.OK.A81	32	79	60	6000	2.141	1.599
Radial	99.OK.A82	32	70	60	6000	3.048	2.299
Radial	99.OK.A83	32	70	60	6000	3.631	2.749
Axial	99.OK.A18	32	98,6	70	6000	1.947	1.499
Axial	99.OK.A23	32	98,6	70	6000	2.465	1.899
Radial	99.OK.A19	32	70	60	6000	3.373	2.549
Radial	99.OK.A25	32	70	60	6000	4.151	3.149

TAKISAWA TAIWAN

BMT60 EX 380 / 310 / 508 / 510 / 708 / 710 / 910 - EX 2000 M/Y - TC 350 MC - TT 350 MC - NEX 108/110/908/910 - LA 200/250 M/Y - LA 250 YS (15 stations) - FX 800 - MX 800 - VTL 450 M - LX 2500 M/Y

Type	BMT	Cod.	ER	H	* Nm	Rpm	LIST PRICE €	SPECIAL PRICE €
Axial	60	99.TK.A12	32	93	50	6000	1.499	1.149
Axial	60	99.TK.A13	32	93	50	6000	2.213	1.699
Radial	60	99.TK.A02	32	90	50	6000	3.139	2.399
Radial	60	99.TK.A05	32	90	50	6000	3.333	2.549

TSUGAMI

BMT65: M06D / M06SD / M06SY / M08SD / M08SY

Type	BMT	Cod.	ER	H Max	* Nm	Rpm	LIST PRICE €	SPECIAL PRICE €
Axial	65	99.TS.A01	25	60	40	8000	1.558	1.199
Axial	65	99.TS.A03	32	60	40	8000	2.141	1.649
Axial	65	99.TS.A02	25	60	40	8000	2.529	1.949
Axial	65	99.TS.A04	32	60	40	8000	3.112	2.449
Radial	65	99.TS.A08	25	65	40	8000	2.529	1.949
Radial	65	99.TS.A10	32	65	40	8000	3.112	2.449
Radial	65	99.TS.A09	25	65	40	8000	3.112	2.449
Radial	65	99.TS.A11	32	65	40	8000	3.112	2.449



2 YEARS WARRANTY

EXPIRES ON 31.07.25

MADE in ITALY



EXPIRATION ON 31 JULY 2025

SPECIAL OFFER

MEKSPÉ 2025



GERARDI SPA

via Giovanni XXIII, 101 - 21015 LONATE POZZOLO
(VA) Italia - Tel. +39.0331.303911 - Fax +39.0331.301534
gerardi@gerardispa.com - www.gerardi.it

Distributore: